

Halloween Experience 2016: Tunnel of Hell

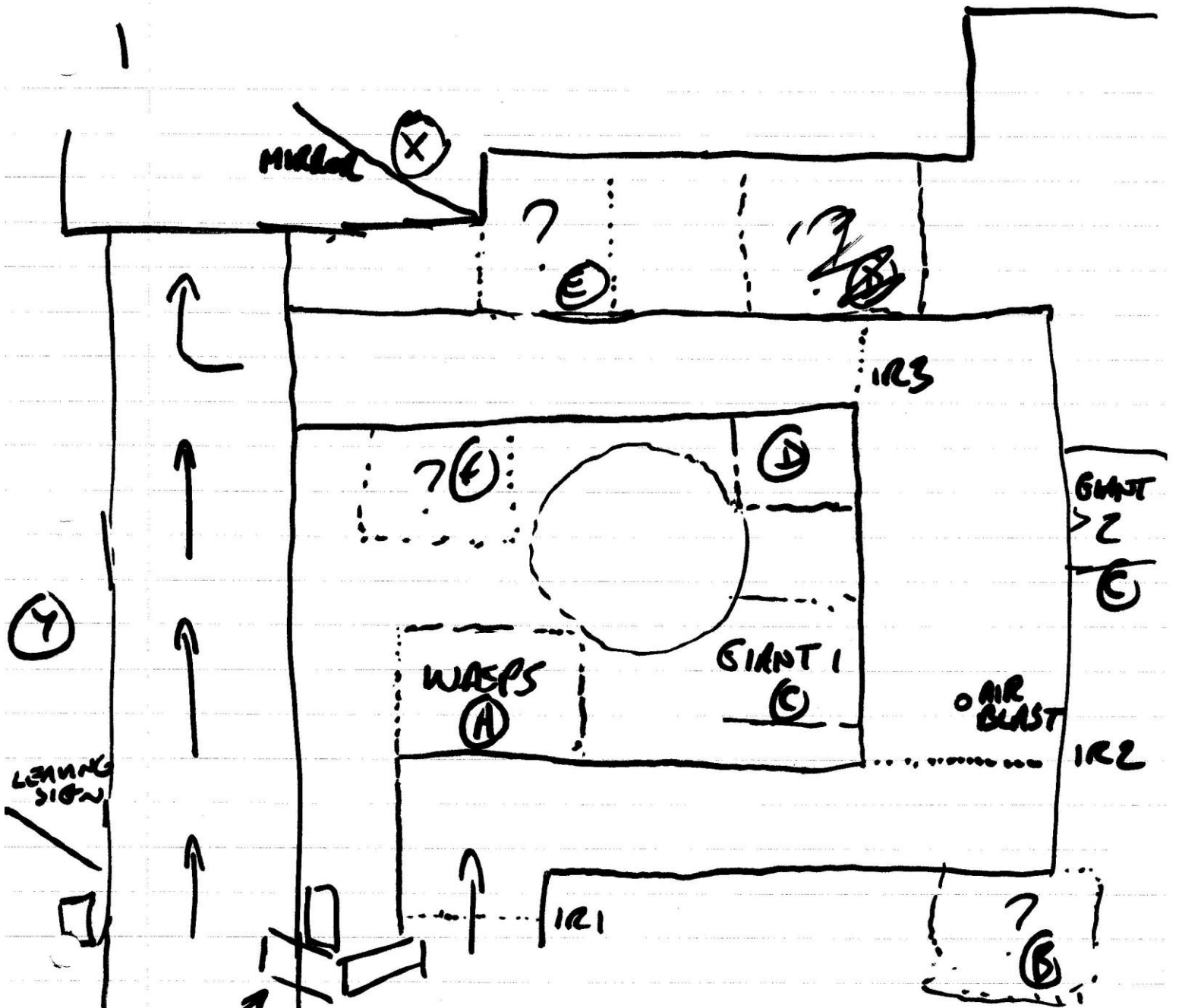
INITIAL CONCEPT IDEAS

AUGUST 2016, JAMES BULLOCK

Included is an early drawing of a proposed tunnel layout, plus some of my first hand-written descriptions of ideas for the animated scenes. Much of the inspiration for the original concept came from Dante's *Inferno* (part of the 14th century work *The Divine Comedy*). The appearances of the scenes and figures were originally to be based more heavily on those described in the literature, directly depicting the sins in the nine circles of Hell (indecision, gluttony, wrath etc.)

Some of this direct referencing was later removed, as were some of the proposed scenes, for reasons of space. In the finished design, only the first scene (scene A) and the third scene (scene C/D) were directly themed from *Inferno*; Scene A depicted a man being stung by wasps, referencing the Vestibule stage of Hell, where the indecisive were 'stung into action'; Scene C/D featured troll-like figures holding rocks, based largely on the hoarders and wasters in Circle IV of Hell. The other scenes contained figures that were similar or loosely related to those described in various stages of *Inferno*.

These are my first ideas for the display; several described here were changed or did not appear in the final design.



- (A) VESTIBULE / INDECISION
- (B) GLUTTON ?
- (C) HOARDERS + SPENDERS
- (D) BANSHEE
- (E)
- (F)
- (X) 'PARADISE' WITH MIRROR
- (Y) THEMING - STATUES ? RED LIGHTS.

FIGURED / SCENES + IDEAS

① 'VESTIBULE' - THE INDECISIVE,
STUNG INTO ACTION.

SCENE A

LOW BUZZING SOUNDS - ANGRY.

REAL VIDEO PROJECTION OF WASPS/BEES
ONTO WALL IN SUCH A WAY THAT IT
SUGGESTS THE FIGURE IS SURROUNDED
BY THEM. PROJECT ONTO THIN FABRIC,
DENIER / NYLON SHEET?

FIGURE IS FAIRLY HUMAN IN APPEARANCE
ARMS RAISED, LOOKS DISTRESSED/PAINED.
COVERED IN STINGS / RED MARKS.

HE ROCKS BACK + FORTH VIOLENTLY
WHILE SCREAMING / SHOUTING IN PAIN.

THIS SCENE, DESPITE APPEARING DIRECTLY
IN FRONT OF ENTRANCE, COULD BE
KEPT HIDDEN BY MEANS OF SKIM OR
SMILAR. IE - SCENE IS NOT LIT UNTIL
VISITORS ENTER.

VIDEO WALL COULD BE DVD-BASED.
AROUND HITS PLAY ON DISC WHEN TRIGGERED.
IE. DISC IS A BLACK MENU UNTIL TRIGGERED,

EXPERIMENT WITH PROJECTION - REAL / MONTA?
WILL IT BE BIG ENOUGH?

② GLUTTONY - TANTALISINGLY OUT OF REACH

SCENE B

REASONABLY SIMPLE SCENE: BIG FAT MAN BOUND IN ROPE, WITH FOOD (CLASSICAL FRUIT BOWL STYLE?)

JUST OUT OF REACH.

HE SHOULD LOOK PAINED - POSSIBLE WHINING FROM 'MESSIAH', OR SIMILAR.

ROPE SHOULD MOVE TO ALLOW HIM TO MOVE AROUND A BIT - OR POSSIBLE ARM REACHING UPWARDS TOWARDS FOOD.

SEPARATE IR - ILLUMINATES ONLY ~~ONE~~ ON CUR?

③ HOARDERS + SPEND THRUSTS

TWO 'GIANT' FOURS, POSITIONED EITHER SIDE OF THE TUNNEL.

THEY ALTERNATELY SWAY BACK AND FORTH TOWARDS THE TUNNEL WALL WHILE HOLDING ALOFT LARGE BOULDERS.

THESE ARE THE HTS, MADE TO RAM ENORMOUS ROCKS INTO ONE ANOTHER, OR AT GUESTS!

THIS SECTION IS (1/22), SEPARATE SCENE IN TERMS OF LIGHTING ETC.

SHOULD BE PITCH BLACK / VERY DIM, AS VISITOR GET NEAR STROBE LIGHTING ALTERNATELY ILLUMINATES BIG LUNGWOG GIANTS, TO HEIGHTEN EFFECT.

LOW BANGING SOUNDS + GIANT MOANING (SYNCED WITH MOVES IF POSSIBLE).

(X) POLCA - PARADISE / SOLACE ETC.

PLAY UP THE REACHING PARADISE SECTION VIA SIGNS ETC.

STUD WALL TYPE SETUP WITH HALF-SILVERED MIRROR.

PRESS BUTTON 'PLASTIC HEAD FROM SHIRAZ?' ON WALL WITH SIGN INVITING PEOPLE TO PRESS.

D SOULY MUSIC, RM MIRROR SOUND EFFECT THIS ONE COULD BE COMPUTER CONTROLLED SINCE IT REQUIRES LIGHTING CHANGES.

'LED WAVE' WATER EFFECTS, LIGHT COLOURED SHEETS + DREAMCATCHERS ETC.

SHOULD LOOK MYSTICAL BUT STILL A LITTLE ODD / MELANCHOLY / UNSURE.

GENERAL THOUGHTS

SCENES SHOULD BE ACTIVE FOR AS LONG AS POSSIBLE - I.E. - A CHAIN OF ABOUT 10 OR MORE PEOPLE SHOULD BE CATERED FOR.

WE IR BARRIERS FOR TRIGGER POINTS THIS YEAR. QUICKER + MORE EFFECTIVE.

'I AM THE WAY...' SOUND CLIP TO PLAY AS VISITORS APPROACH ENTRANCE.

PLAY UP THE 'THOSE WHO HAVE SINNED' MUST PASS THROUGH THE TUNNEL, BUT AUDIO MAKING IT SOUND OVERLY RELIGIOUS, ALSO THE 'NON-SCARY ROUTE' CAN BE HUMOROUSLY PLAYED UP AS BEING A 'LESS HELLSH' ALTERNATIVE FOR THOSE TOO YOUNG ^{WHO} ~~TO~~ HAVE ~~BEEN~~ LED A BLAMABLE EXISTENCE ETC. HUMOUR IS THE WATCHWORD, PERHAPS GREATER REWARDS FOR THOSE WHO ENTER TUNNEL...!

POTENTIAL FOR COMPRESSED AIR BLAST IN FLOOR (PIRE COUNTERSUNK / GLUED INTO WOODEN PLATFORM.
(WOULD NEED A BIGGER COMPRESSOR...))

UP TO SIX MOVING FIGURES NEEDED, NOT INCLUDING MIRROR / DONKEY.